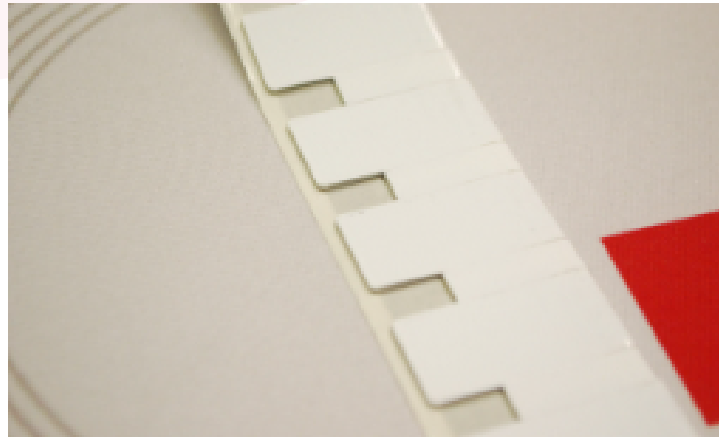


RFID UHF ON-METAL LABEL 30X15MM



Global Tag **METALLY 30x15**, UHF On-Metal label, has been designed for indoor and outdoor uses where good performance and easy and quick installation on metal surfaces are required, as well as the possibility to print the label in loco.

The PET surface and the strong backside glue make the tag a great solution for both indoor and outdoor use.

Metally is suitable for maintenance application, tracking of metal pipes, container traceability as well as every application in which the main requirement is a tag for metal surfaces.

MECHANICAL AND ENVIRONMENTAL SPECIFICATIONS:

Dimensions: 30x15mm

Mounting System: Adhesive (3M)

Weight: 1g

Surface Material: EVA or PET Material

Color: Generally white color – Printing options available on request

Class Protection: IP67 (Totally protected against ingress of solid / Protected against short periods of immersion in water.)

Storage Temperature: -55°C (for 3h) to +100°C (for 2h) / -67°F (for 3h) to +230°F (for 2h) (for any other particular request contact us)

Operating Temperature: -20°C to +70°C / 4°F to +158°F

Weather Ability: Very Good, including UV resistance and sea water

Delivery format: in reel

Expected lifetime: 10 Years in normal operating conditions

Certificate: EPC Global

CHIP SPECIFICATION AVAILABLE:

	UHF 860-960MHz
Device type	Class 1 Gen 2
Air interface protocol	ISO18000-6C
IC Type Available	Monza R6; Monza R6-P
Read Range	Up to 4,5 meters

CUSTOMIZATION OPTIONS:

Printing options: serial progressive number from database, randomize number from database text and Barcode or QRCode. Other customizations are available on request.

Silk Printing: 2-colors printing logo.

Pre-Encoding: Customer specific encoding of EPC or User Memory (also from Database). Locking permanently or with password. Insert into Database TID code.

INSTALLATION MODE:

With 3M glue: when mounting the tag with adhesive background, clean and dry the surface to obtain the maximum bond strength.

ORDER INFORMATION:

PRODUCT CODE: GT-MTLLY3015-MR6P

Please, contact us for more information: Global Tag Srl – Via Zanardelli 13/A 25062 Concesio (BS) - Italy

P +39 030 2005259

S global-tag

W www.global-tag.com

M sales@global-tag.com