

# RFID PLANT LABEL "VIVARY"



Global Tag **VIVARY** is a laminated RFID/NFC tag specifically designed for the tracking of plants and seedlings in nurseries and plantations. Available in UHF, HF and NFC technologies, it can be directly mounted on plants by bending the tag onto itself using the dedicated pocket.

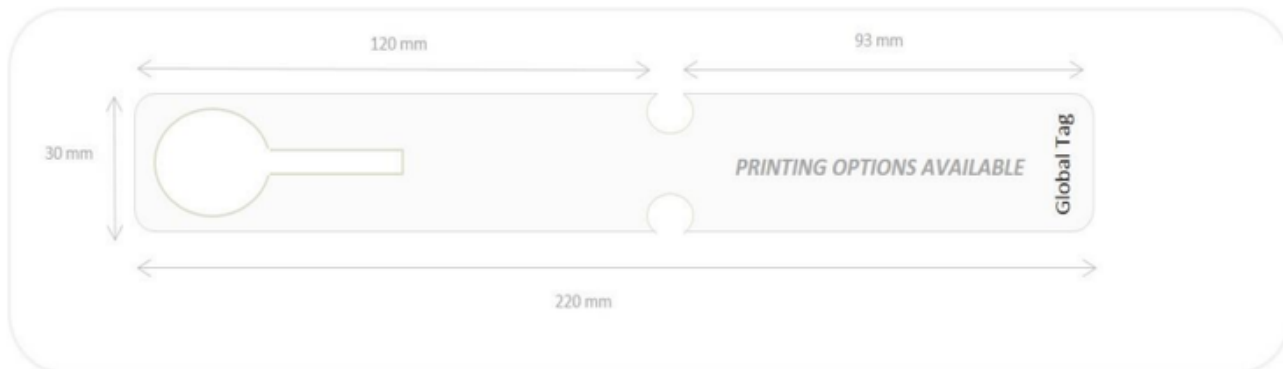
Its flexible structure allows easy installation while ensuring reliable identification throughout the plant lifecycle, even in outdoor environments and nursery operations.

VIVARY can be customized with QR code, barcode, logo or serial number printing, enabling easy integration into plant traceability and management systems.

The tag can be supplied in individual format, in reels or in fanfold, according to customer and application requirements.

## MECHANICAL AND ENVIRONMENTAL SPECIFICATIONS:

**Dimensions:** 220x30 mm - 8,66x1,18 inches



**Mounting System:** Bending

**Weight:** 1,1gr.

**Material:** PET/PP

**Color:** White (default color); others on request

**Class Protection:** IP65 (Limited protection against dust ingress. (no harmful deposit), / Protection from splashed water)

**Storage Temperature:** -25°C to 85°C / -13°F to +185°F

**Operating Temperature:** -10°C to +50°C / 14°F to 122°F

**Weather Ability:** Very Good

**Delivery format:** Individual format, in fanfold or in reel

**Expected lifetime:** Some years in normal operating conditions

## CHIP SPECIFICATION AVAILABLE:

	HF 13,56MHz	UHF 860-960MHz
Device type	N.D.	Class 1 Gen 2
Air interface protocol	ISO14443 and ISO15693 and NFC	ISO18000-63
IC Type Available	I-Code SLIX, Mifare Ultralight, Mifare Classic 1K, Ntag213, Ntag216, others on-request	Alien Higgs9, NXP U-Code8, NXP U-Code9, others on request.
Size Inlay	18x56mm	90x12mm
Read Range	From 2 to 30cm	Up to 7meters

## CUSTOMIZATION OPTIONS:

**Silk Printing:** Serial UID, serial progressive number from database, randomize number from database text and Barcode or QRCode. Other customization on request. 4-colors printing logo.

**Pre-Encoding:** Customer specific encoding of EPC or User Memory (also from Database). Locking permanently or with password. Insert into database TID code. On NTag21x chip (NFC) encoding memory (mailto, URI or other information) from database.

**APPLICATION NOTE:**

Plants maintenance and control  
Seedlings inventory

**ORDER INFORMATION:**

**PRODUCT CODE:** GT-VVRY-xx (xx defined type of required chip)

Please contact us for more information:

Global Tag Srl – Via Zanardelli 13/A, 25062 Concesio (BS) - Italy

P +39 030 2005259

S global-tag

W [www.global-tag.com](http://www.global-tag.com)

M [sales@global-tag.com](mailto:sales@global-tag.com)

**DISCLAIMER:**

The information in this document is subject to change without notice. Global Tag assumes no responsibility for any errors that may appear in this document. Application recommendations are guidelines only - actual results may vary and should be confirmed. This is a general-purpose product not designed or intended for any specific application. Global Tag Srl or its subsidiaries are not responsible for the performance or support of third party products and does not make any representations or warranties whatsoever regarding quality, reliability, functionality, or compatibility of these devices or products.

© Copyright 2025 - Global Tag Srl