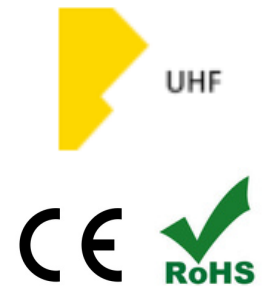
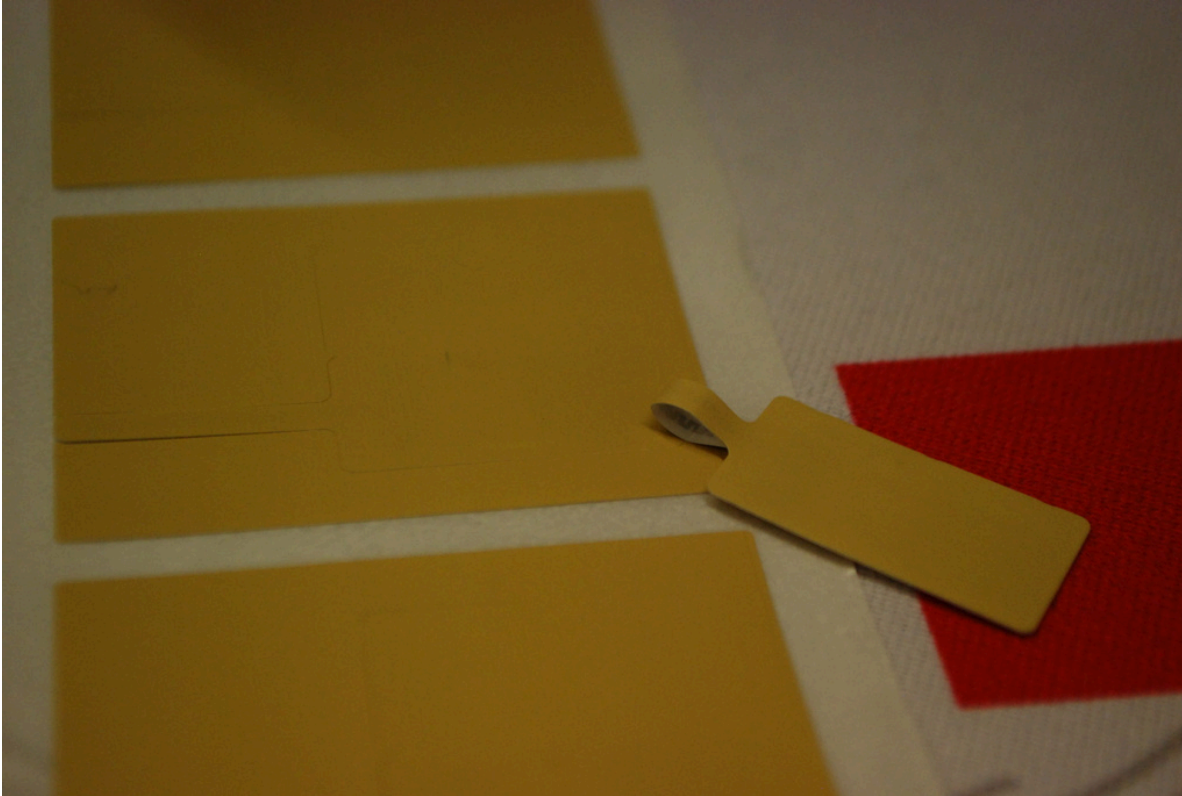


RFID JEWELRY TAG



Global Tag **RFID JEWELRY TAG** is a RFID tag designed for item tracking and data capture, suitable for luxury goods such as jewelry, watches and eyewear. Its compact and lightweight structure allows reliable identification without affecting the appearance of the tagged item.

Thanks to the wrap-around system, the tag can be easily mounted on different types of jewelry items, including very small objects, ensuring flexibility across multiple applications.

Jewelry tags are supplied in rolls and can be printed and encoded using common RFID printers, enabling fast integration into retail and inventory management processes.

Different formats and sizes can also be developed according to customer requirements, together with customization options such as printing and encoding.

Please contact us for more information:

Global Tag Srl - Via Zanardelli 13/A, 25062 Concesio (BS) - Italy

P +39 030 2005259

S [global-tag](http://global-tag.com)

W www.global-tag.com

M sales@global-tag.com

DISCLAIMER:

The information in this document is subject to change without notice. Global Tag assumes no responsibility for any errors that may appear in this document. Application recommendations are guidelines only - actual results may vary and should be confirmed. This is a general-purpose product not designed or intended for any specific application. Global Tag Srl or its subsidiaries are not responsible for the performance or support of third party products and does not make any representations or warranties whatsoever regarding quality, reliability, functionality, or compatibility of these devices or products.

© Copyright 2025 - Global Tag Srl