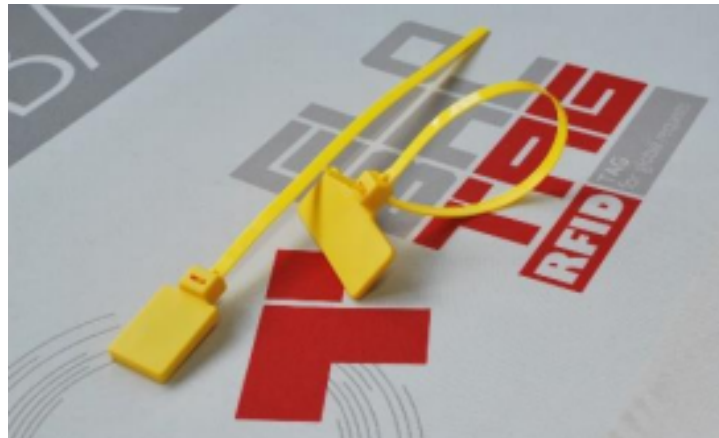


## RELEASABLE CABLY



Global Tag **RELEASABLE CABLY** is special RFID cable tie which shows a particular locking design that allows the release of its tail and the possibility to use the tag several times. It is available in HF 13.56Mhz, both ISO 14443 (NFC) and ISO 15693 and in UHF 860-960Mhz. Different customizations are available such as logo printing, serial number laser engraving, EPC and user memory encoding

### MAIN FEATURES:

#### Dimensions:

➤ **HF/NFC/UHF Version:** 335x30mm (including 282mm tail length) / thickness 1cm

➤ **Only UHF Version:** 330x75mm (including 282mm tail length) / thickness 1cm

**Color:** Different colors

**Storage Temperature:** -30°C to + 100°C

**Operating Temperature:** -25°C to + 85°C

#### IC Chip:

➤ **HF/NFC Version:** Mifare Ultralight, Mifare Classic 1K, N-Tag213, N-Tag216, I-Code SLIX, others on request

➤ **UHF Version:** Alien Higgs3, Alien Higgs9, NXP U-Code8, NXP U-Code9, Monza R6, others on request

**Product Code:** GT-CBLY\_RE-XX