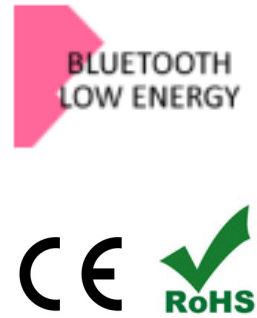
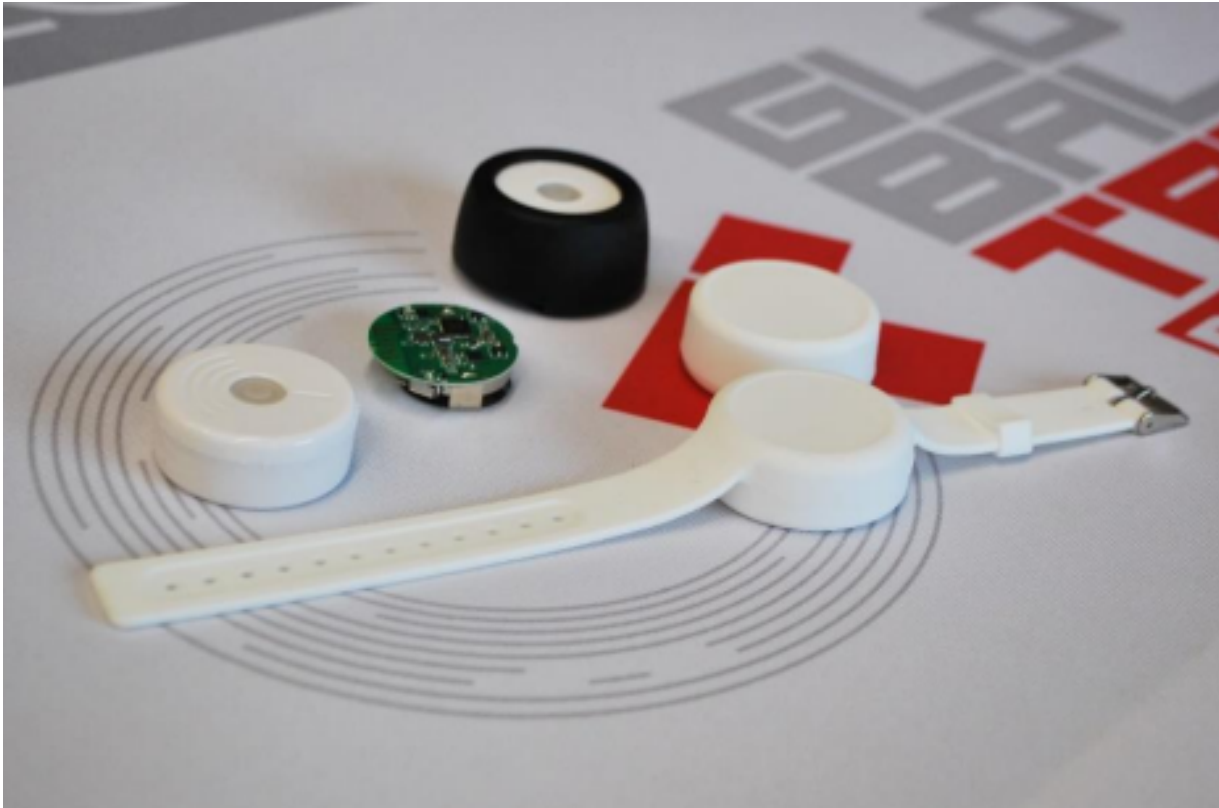


INDUSTRIAL BEACON BLE



Industrial Beacon Series is a range of Bluetooth beacons designed and developed for use in harsh environments.

Bigger and more rugged housings, high-visibility LEDs and extended battery life (CR2477) are the key features that make this beacon family suitable for industrial applications.

The Industrial Beacon is designed for asset tracking within companies and is available with different silicone housings, allowing adaptation to specific project requirements.

Beacon parameters such as transmission power and broadcast interval can be easily configured to optimize performance.

Customization options include case color, logo printing and variable content laser engraving, ensuring flexibility and alignment with customer needs.

MECHANICAL AND ENVIRONMENTAL SPECIFICATIONS:

Dimensions: ϕ 40mm diameter / ϕ 1,57in diameter

Thickness: 16mm / 0.63in

Weight: 20,6gr (including battery)

Material: PC (Polycarbonate)

Color: White (customized on request)

Class Protection: IP67

Battery type: CR2477 replaceable (Panasonic®) or rechargeable

Battery life: 3 years (with Broadcast Interval: 1 second and Tx Power: 0dB)

System-On-Chip (SoC): Nordic nrf52832

Storage Temperature: -15°C to +50°C / 5°F to +122°F

Operating Temperature: -15°C to +45°C / 5°F to +113°F

Delivery format: Singulated

Expected lifetime: Years in normal operating conditions

G-Sensor: ST Microelectronics mod. LIS3DH

Temperature/humidity sensor: Sensirion mod. SHT3x-DIS

ELECTRONIC AND OPERATIVE PARAMETERS:

Operation Frequency: 2400-2483,5MHz

IEEE Standard: 802.15.1 (Bluetooth 4.2 Low Energy BLE)

Transmission distance: up to 200meters

Transmission Power: 4 different Level (-23dBm / -6dBm / 0dBm / +4dBm)

Default Broadcast Interval: 1s

Broadcast interval: 100ms to 10000ms. (step of 100ms) – Extensible up to 6hours (with 3x 100ms. each time)

Support Operating System: iOS7.0 and Android 4.2+

Scan Response: Yes (max 31Byte Length), containing Battery level, Device name (11Byte), Sensors value

FCC and CE Certification

CUSTOMIZATION OPTIONS:

Housing Printing: Logo printing or serial number laser engraving

Label on surface: Label can be customized according to customer's request

Setting / Encoding: Beacons services values can be pre-set as per customer's requirement (from xls file)

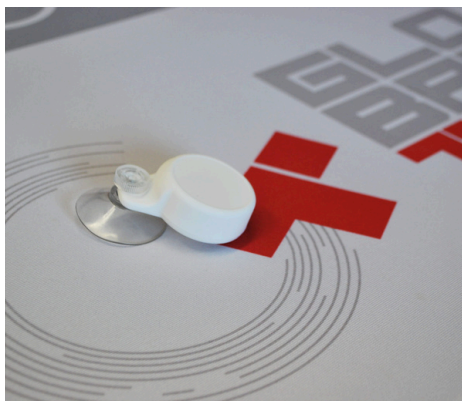
Available sensors: Accelerometer and/or temperature/humidity sensor

Firmware: Different FW are available, which can be uploaded on request

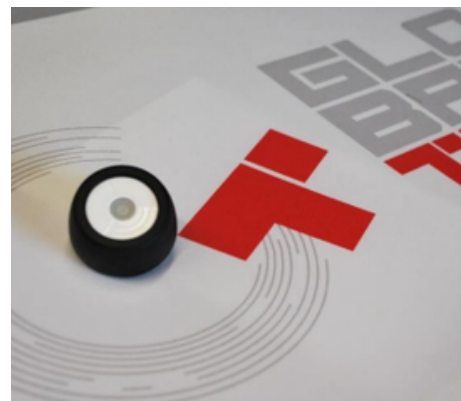
APPLICATION NOTE:

- Retail Marketing
- Indoor/Outdoor
- Asset Tracking
- Indoor Positioning
- Smart Guide for theme parks
- Pick-to-light
- Maintenance
- Worker Safety
- Cold chain management

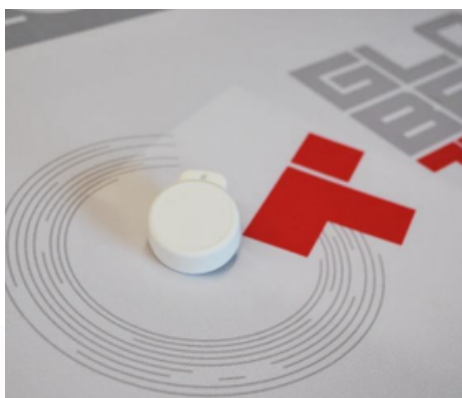
FAMILY ACCESSORIES:



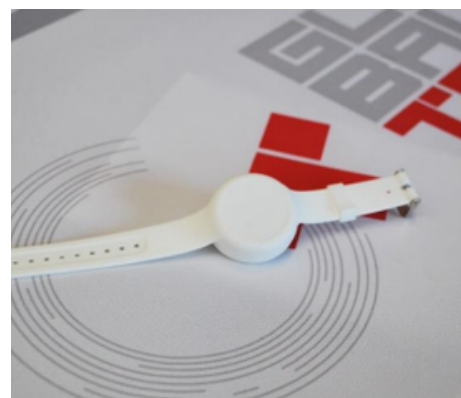
SUCTION CUP



PROTECTION CASE



KEYFOB



WRISTBAND

PRODUCT CODE AND ORDER INFORMATION:

GT-I_DKBY-BLE: Industrial Beacony without sensors

GT-I_DKBY_A-BLE: Industrial Beacony with accelerometer

GT-I_DKBY_TH _BLE: Industrial Beacony with temperature/humidity sensor

GT-I_DKBY_ATH-BLE: Industrial Beacony with accelerometer and with temperature/humidity sensor

For any clarification, please do not hesitate to contact us at any time:

Global Tag Srl - Via Zanardelli 13/A, 25062 Concesio (BS) - Italy

P +39 030 2005259

S global-tag

W www.global-tag.com

M sales@global-tag.com

DISCLAIMER:

The information in this document is subject to change without notice. Global Tag assumes no responsibility for any errors that may appear in this document. Application recommendations are guidelines only - actual results may vary and should be confirmed. This is a general-purpose product not designed or intended for any specific application. Global Tag Srl or its subsidiaries are not responsible for the performance or support of third party products and does not make any representations or warranties whatsoever regarding quality, reliability, functionality, or compatibility of these devices or products.

© Copyright 2025 - Global Tag Srl