

DISK BEACON BLE EVO



Global Tag **Disk Beacon EVO** is a compact and advanced Bluetooth Low Energy (BLE) device designed for industrial, logistics, and IoT applications. It enables real-time tracking and monitoring of assets, people, and environments through reliable and energy-efficient wireless communication.

Thanks to Bluetooth 5 technology, the device ensures long transmission distances and stable performance even in complex or signal-dense environments. The Beacon EVO supports customizable advertising formats and is fully compatible with iBeacon and Eddystone standards, allowing seamless integration with existing systems and platforms.

Its compact and robust design, combined with integrated sensors and flexible configuration options, makes it a highly versatile solution for modern asset tracking and smart monitoring systems. Additionally, its low power consumption ensures extended battery life, reducing maintenance needs and making it ideal for large-scale deployments.

MECHANICAL AND ENVIRONMENTAL SPECIFICATIONS:

Dimensions: \varnothing 31 mm × 10 mm thickness

Weight: ~8.2 g

Material: Polycarbonate (PC) housing

Color: Standard white (customizable)

Class Protection: IP65 (dust and water resistant)

Storage Temperature: -15°C to +50°C

Operating Temperature: -15°C to +45°C

Weather Ability: Good resistance to environmental conditions

Delivery format: Singulated

Expected lifetime: Up to 1 year (depending on configuration)

TECHNICAL FEATURES:

Operating Frequency: 2400 – 2483.5 MHz

Standard: Bluetooth Low Energy (BLE 5.0 / 5.2)

Transmission Distance: Up to 500 meters

Transmission Power: From -26 dBm to +6 dBm (adjustable)

Broadcast Interval: Configurable (100 ms to 190 ms)

Sensors:

- Accelerometer (motion & free-fall detection)
- Optional temperature and humidity sensors

Protocols Supported:

- iBeacon
- Eddystone

Compatibility:

- iOS and Android devices
- Third-party BLE firmware supported

POWER SUPPLY:

Battery: Replaceable CR2032 (3V)

Battery Life: Up to 1 year (depending on settings)

INPUT / OUTPUT:

- Dual-color LED (status indication)
- ON/OFF button with additional functions (reset, alarm trigger)

CUSTOMIZATION OPTION:

Printing & Marking:

- QR code
- Serial number
- Logo printing

Configuration:

- Adjustable transmission power
- Broadcast interval
- Custom advertising format

Advanced Options:

- Integration with RFID (HF or UHF) for hybrid BLE + RFID solutions

INSTALLATION MODE:

- Adhesive mounting
- Accessories (holder, wristband, keyfob, wall mount)
- Flexible installation depending on application

APPLICATION NOTE:

Asset tracking: Real-time monitoring of equipment and goods

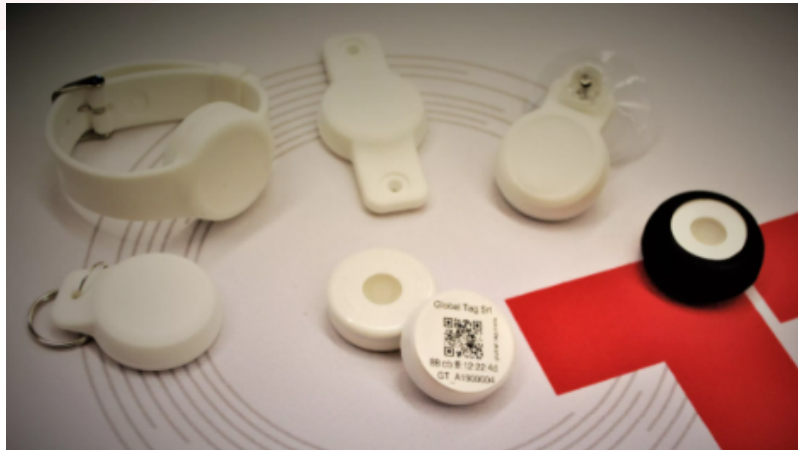
Industrial IoT: Data collection from sensors (motion, temperature, humidity)

Logistics & supply chain: Tracking of containers, pallets and vehicles

Safety & monitoring: Movement detection and alarm-based applications

Proximity marketing: Customer interaction and location-based services

BEACON ACCESSORIES



WRISTBAND BEACON:

Wristband Beacon is a wearable BLE device for people tracking, especially in indoor environments.

Its silicone housing allows use in showers and short immersion; it features a buckle with optional anti-removal system for secure use in healthcare; the OFF button can be disabled to prevent tampering; it supports alarm function and optional RFID/NFC integration.

KEYFOB BEACON:

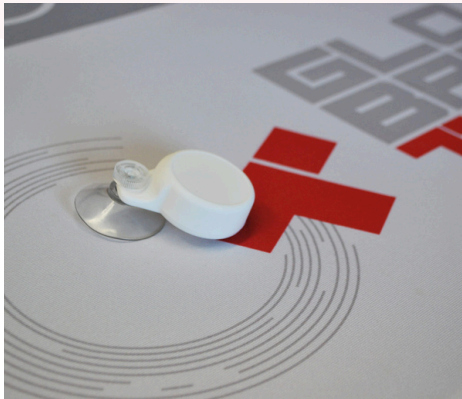
Keyfob Beacon is a wearable BLE device for tracking people, animals, or objects; its silicone case ensures IP67 protection against water and dust.

Parameters like TX power and interval can be configured via app or BLE software; it supports alarm function and multiple customization options; RFID or NFC can be integrated for dual-frequency solutions.

WALL MOUNT BEACON:

Wall Mount Beacon is a BLE tag designed for asset tracking and indoor location systems.

Its silicone housing provides resistance to shocks, impacts, and water exposure; main parameters can be configured via app or pre-set; it can be easily mounted with screws or rivets; it supports alarm function and optional RFID/NFC integration.

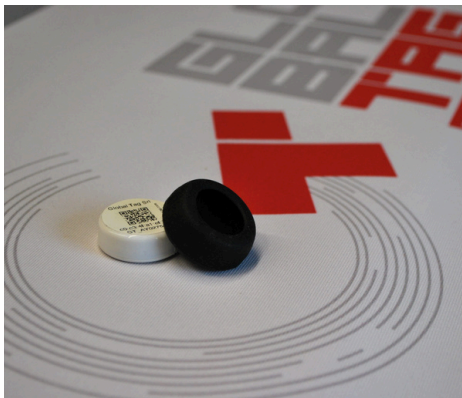


SUCTION CUP BEACON:

Beacon with suction cup for easy installation on smooth surfaces where you also need to be able to remove the device easily.

It is the latest product launched on the market, designed for the Smart Dealer (car traceability).

Based on Disk Beacons, as a result it has the same basic features.



KEYFOB BEACON:

Silicone protection case, which helps the mounting of the device and it improves the resistance to the shocks and to the water.

Further, it can be fixed by using cable ties or iron wire. It's developed for general purpose applications.

Based on Disk Beacons, as a result it has the same basic features.

DISCLAIMER:

The information in this document is subject to change without notice. Global Tag assumes no responsibility for any errors that may appear in this document. Application recommendations are guidelines only - actual results may vary and should be confirmed. This is a general-purpose product not designed or intended for any specific application. Global Tag Srl or its subsidiaries are not responsible for the performance or support of third party products and does not make any representations or warranties whatsoever regarding quality, reliability, functionality, or compatibility of these devices or products.

© Copyright 2025 - Global Tag Srl