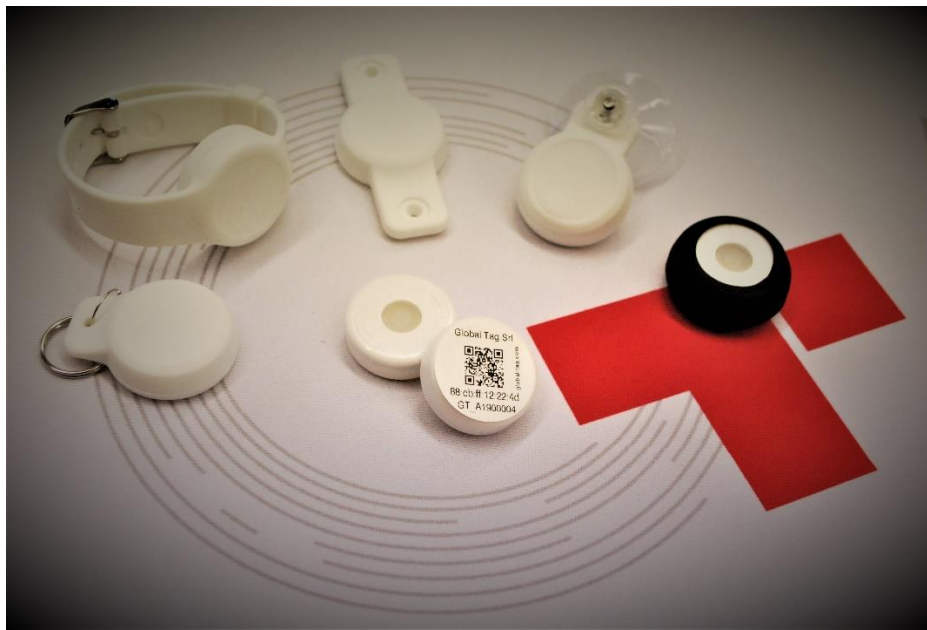


GLOBAL TAG BLE DEVELOPMENT KIT COVID-19 solutions



Beacon with sensors + accessories



Global Tag **Beacon BLE DEVELOPMENT KIT** is proposed to test Beacons and to develop BLE App/SW to contrast Covid19 spreading, thanks to the new special services which help to ensure contact tracing and social distancing.

Thanks to their ductility, these BLE beacons can be used even after the end of the Covid emergency, thus allowing long-term technological innovation into enterprise environment.

Beacons can also be integrated in complex systems, with the presence of Gateway devices, to contrast crowd in closed places.

Also, they can be used for applications in logistics, industry and at all levels of the company.

In other words, the proposed beacons, after the Covid emergency, can be rearranged for other purposes and other projects. Detection range reaches up to 200 meters.

Devices are supplied with CR2032 or CR2477 battery (PANASONIC®), which can be easily replaced thanks to the snap open/close system of the plastic case.

iBeacon and Eddystone (UID, TLM, URL) protocols are available, and Beacons can operate with iOS 7.0 and Android 4.3+ system.

The BLE Development Kit also includes Demo APP for Android, technical parameters for SDK Android, IOS or third part, PDF user guide.

Advantages

✔ Social distance

BLE beacons help to maintain social distancing thanks to the possibility of communicating by the beacons



✔ Standard

BLE Beacons by Global Tag, can work with third parts devices



✔ Convertibility

After the Covid emergency, the beacons can be rearranged for other purposes and other projects.



✔ Contact tracing

Identification of people who had contacts with an infected person and collection of informations on such contacts.



Development Kit Beacon “Standard”



COMPOSITION:

DISK BEACON (quantity as below described) WITH INTEGRATED SENSORS AND ACCELEROMETER with chip NRF52810.

(Dimensions: Ø31mm diameter / Ø1,22in diameter Thickness: 10mm / 0,334in) - Battery CR2032, Battery life: 1/2years

5pcs. Keyfob accessory

5pcs. Wristband accessory

Technical support by phone and e-mail and technical documentation.

DEMO APP software to test main beacon functions. (for more information please visit our website)

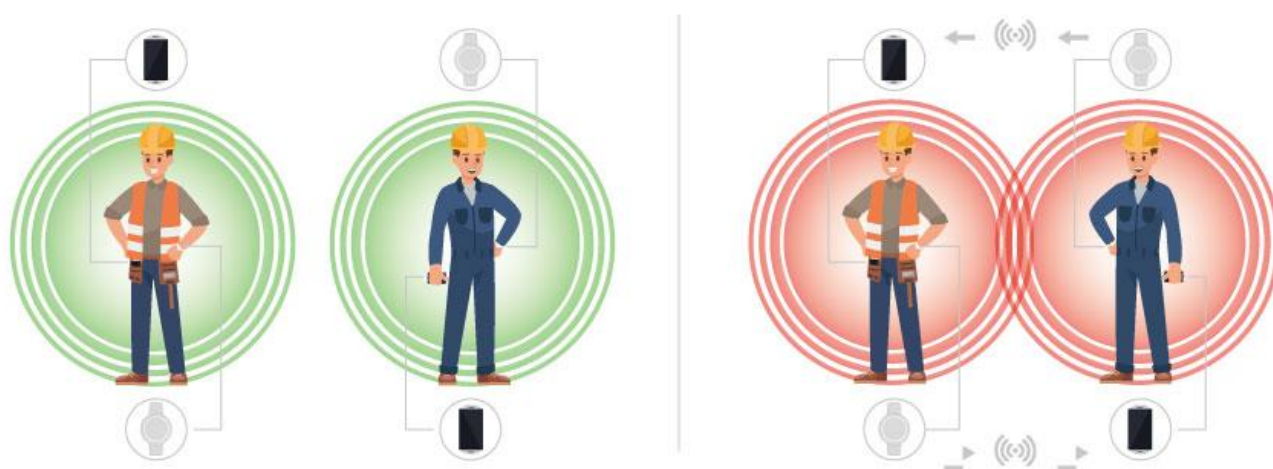


Fig. 1 – Social distancing and Contact Tracing functions are made with phone

10pcs. Beacon “STANDARD” with accessories

ask for quotation



Development Kit Beacon “CONTACT TRACING”



IT HAS THE ADDITIONAL GATEWAY FUNCTION FOR CONTACT TRACING. BEACON CAN LISTEN AND DETECT ANOTHER BEACON IN THE PROXIMITY AREA (from 1meter to 2meters.). When it occurs, the beacon can:

- 1) Emit light signals (blinking LED)
 - 2) Send a special “Contact” advertising packet
 - 3) Store into beacon memory the Mac Address of the beacons detected in the proximity area.
- BEACON CAN ALSO COMMUNICATE WITH SMARTPHONES OR GATEWAY DEVICES.

COMPOSITION:

DISK BEACON (quantity as below described) + ACCELEROMETER with chip NRF52832.

(Dimensions: Ø31mm diameter / Ø1,22in diameter Thickness: 10mm / 0,334in) - Battery CR2032, Battery life: 7-30gg.

5pcs. Keyfob accessory

5pcs. Wristband accessory

Technical support by phone and e-mail and technical documentation.

DEMO APP software to test main beacon functions. (for more information please visit our website)

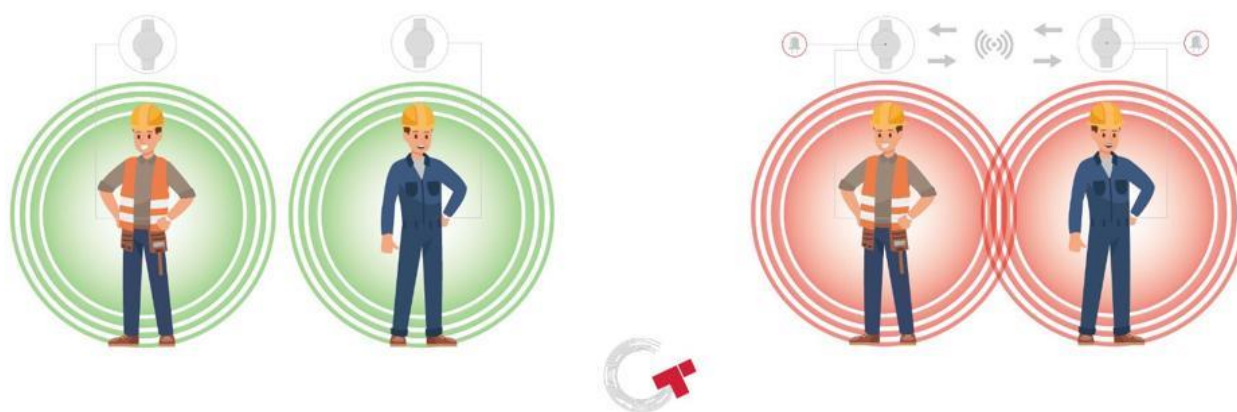


Fig. 1 – Contact Tracing functions is beacon to beacon. Mac Address are stored into memory. Advertising sent special packet “CONTACT”. Social distancing is obtain with flashing LED

10pcs. Beacon “CONTACT TRACING”

ask for quotation

Development Kit Beacon “SOCIAL DISTANCING + CONTACT TRACING”



Smart Beacon designed to make sure people keep the safety distance between them. IT HAS THE ADDITIONAL GATEWAY FUNCTION FOR CONTACT TRACING. BEACON CAN LISTEN AND DETECT ANOTHER BEACON IN THE PROXIMITY AREA (from 1meter to 2meters.). When it occurs, the beacon can:

- 1) Emit light signals (blinking LED)
 - 2) Start to vibrate
 - 3) Activate the buzzer mode
 - 4) Send a special “Contact” advertising packet
 - 5) Store into beacon memory the Mac Address of the beacons detected in the proximity area.
- BEACON CAN ALSO COMMUNICATE WITH SMARTPHONES OR GATEWAY DEVICES.

COMPOSITION:

DISK BEACON (quantity as below described) + ACCELEROMETER with chip NRF52832.

(Dimensions: Ø39mm diameter / Ø1,22in diameter Thickness: 15mm / 0,334in) - Battery CR2477, Battery life: 25-90gg.
10pc. Keyfob accessory

Wristband will be available from 10th June

Technical support by phone and e-mail and technical documentation.

DEMO APP software to test main beacon functions. (for more information please visit our website)

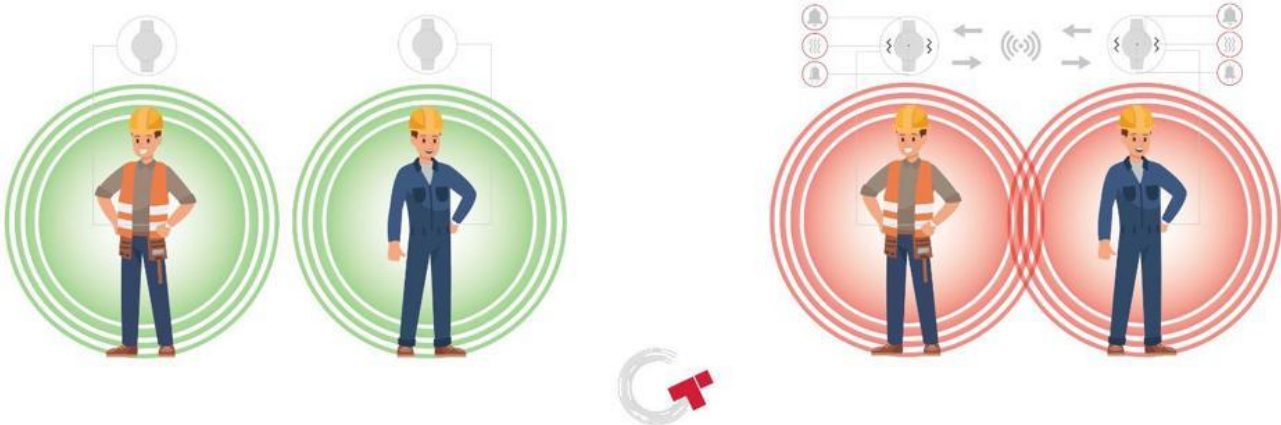


Fig. 1 – Contact Tracing and social distancing (with vibrate, buzzer and LED) functions is beacon to beacon. Mac Address are stored into memory. Advertising sent special packet “CONTACT”

10pcs. Beacon “SOCIAL DISTANCING + CONTACT TRACING” **ask for quotation**



FORM TO ORDER:

Select the chosen Developer Kit, fill the required fields here below and send it back to us.

All prices are VAT excluded. Shipment is excluded.

- | | | |
|--------------------------|--|--------------------------|
| <input type="checkbox"/> | 10pcs. Beacon "STANDARD" with accessories | ask for quotation |
| <input type="checkbox"/> | 10pcs. Beacon "CONTACT TRACING" | ask for quotation |
| <input type="checkbox"/> | 10pcs. Beacon "SOCIAL DISTANCING + CONTACT TRACING" | ask for quotation |

COMPANY NAME: _____

NAME AND SURNAME: _____

E-MAIL ADDRESS: _____

INVOICE ADDRESS: _____

DELIVERY ADDRESS: _____

CITY: _____

COUNTRY: _____

VAT N.: _____

SDDI N. (only for Italy): _____

Please, send the filled form at: sales@global-tag.com

DISCLAIMER

The information in this document is subject to change without notice. Global Tag assumes no responsibility for any errors that may appear in this document.

Application recommendations are guidelines only - actual results may vary and should be confirmed. This is a general purpose product not designed or intended for any specific application.

Global Tag Srl or its subsidiaries are not responsible for the performance or support of third party products and does not make any representations or warranties whatsoever regarding quality, reliability, functionality, or compatibility of these devices or products.

© Copyright 2020 - Global Tag Srl