

PRODUCT DATASHEET

GLOBAL TAG **ON-METAL TOKKY 34**



Global Tag **ON-METAL TOKKY 34** Tag is a very heavy IP68 transponder. Waterproof, with one hole is available in LF, HF, and also NFC Ready.

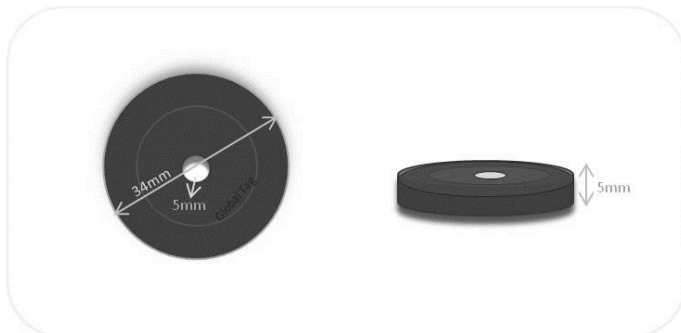
**ON-METAL TOKKY 34** Tag is generally made also for on-metal surface but can be used on all different surface type as plastic, glasses or wood.

Are available different customization as color mold, UID or serial



**MECHANICAL AND ENVIRONMENTAL SPECIFICATIONS**

**Dimensions:** 34mm diameter / 1,34in diameter



**Mounting System:** Rivet Holes (one hole)  $\varnothing$  5mm (0,20 in) and/or adhesive (3M 467). Optionally Foam 2or 3mm

**Weight:** 4gr.

**Material:** High Quality ABS (for case) – Optionally Foam (for support layer)

**Color:** Generally dark grey – Available optionally any other colors

**Class Protection:** IP68 (Totally protected against ingress of solid / Protected against long period of immersion)

**Storage Temperature:** -55°C (for 3h) to +120°C (for 2h in the oven) / -67°F (for 3h) to +248°F (for 2h in the oven) (for any other particular request or various environment, contact us)

**Operating Temperature:** -25°C to +85°C / -13°F to +185°F

**Weather Ability:** Very Good, including UV resistance and sea water

**Delivery format:** Singulated

**Expected lifetime:** Years in normal operating conditions

**Chemical resistance:**

No physical or performance changes in (tested up to, more hours can be):

- 200 hours Motor oil immersion
- 200 hours Salt water (salinity 10%) exposure
- 200 hours H<sub>2</sub>SO<sub>4</sub> Sulfuric acid (10% pH 2) exposure
- 24 hours NaOH Caustic Soda (10%, PH 13) exposure
- 24 hours HCl Muriatic Acid (10%) exposure
- 24 hours Na<sub>2</sub>CO<sub>3</sub> Soda Solvay
- 24 hours NH<sub>3</sub> Ammoniac (5% to 25%)

Values in the table are the best recommendations; resistance against environmental conditions depends on the combinations of all influencing factors, exposure duration and chemical concentrations. Thus, product's final suitability for certain environmental conditions is recommended to be tested. We are available for other information.



## CHIP SPECIFICATION AVAILABLE

	LF 125Khz	HF 13,56MHz
Device type	N.D.	N.D.
Air interface protocol	N.D.	ISO14443 and ISO15693 and <b>NFC</b>
IC Type Available	TK4100, T5577, EM4200, other on request	I-Code SLIX, I-Code SLIS, Mifare Ultralight, Mifare Classic 1K, Mifare Classic 4K, Ntag203, other on-request
Size Inlay	30mm diameter	30mm diameter
Read Range	Up to 10cm	Up to 10cm

## ON-METAL SOLUTION

**ON-METAL TOKKY 34** is generally made with integrated on-metal layer for metal surface. This solution can be also used on different material surface (plastic, glasses wood i.e.). For custom production we are able to produce **TOKKY34** without integrated on-metal layer for cheaper solution

## CUSTOMIZATION OPTIONS

**Printing laser engraving:** Serial UID, serial progressive number from database, randomize number from database text. Other customization on required.

**Silk Printing :** 4-colors printing logo (depends from logo type)

**Pre-Encoding:** Customer specific encoding LF or HF (ISO15693 or ISO14443) user memory. For NFC chip encoding memory with different type of NFC (E-mail, URI etc.)

## INSTALLATION MODE

**With 3M 467MP Adhesive model:** when mounting the tag with adhesive background, clean and dry the surface for obtaining maximum bond strength. Ideal temperature

For more information about adhesive check at this link: <http://multimedia.3m.com/mws/media/1040640/high-performance-adhesive-transfer-tapes-with-3m-adhesive-200mp.pdf>

**With Foam 2 or 3mm:** when mounting the tag on irregular surface you can use foam 2or 3mm with one side 3M 467 adhesive.

For more information about adhesive check at this link: <http://multimedia.3m.com/mws/media/1040640/high-performance-adhesive-transfer-tapes-with-3m-adhesive-200mp.pdf>

**With Screws:** Size M4.

**With Pop Rivet: Size 4mm.** We have available rivet and also optional Manual pistol rivet.



**Note:** Screw or Pop Rivet are recommended to be used in every application that includes risk for high mechanical stress or low temperature during tag fixing with adhesive.



## APPLICATION NOTE

**Asset management:** **ON-METAL TOKKY 34** with small size and hole, can be used to track and manage assets even when they are outdoors or in harsh conditions. With adhesive, and also with screw it's very easy to applied.

**Production management:** **ON-METAL TOKKY 34** help to track and trace all production steps inserting in memory all information for quality control, production batch, timing of production and so on.

**Maintenance:** **ON-METAL TOKKY 34** is strong tag made to improve maintenance service (for example of lift, electric panels).

**Management of security patrols:** **ON-METAL TOKKY 34** is best solution for check points of security for security patrols company.

## ORDER INFORMATION

Standard product is made with **ABS Material for On-Metal Surface**

**PRODUCT CODE:** GT-T34OM-xx (xx defined type of chip required)

On request we can made this tag with **Nylon Material for On-Metal Surface**

**PRODUCT CODE:** GT-T34OM\_B-xx (xx defined type of chip required)

Foam adhesive optionally has code:

**PRODUCT CODE:** GT-FOAM2\_34 Foam material circular size 34mm with 2mm thickness

**PRODUCT CODE:** GT-FOAM3\_34 Foam material circular size 34mm with 3mm thickness

On demand we can also produce transponder with different color or with other type of customization... contact us for more information:

**Global Tag Srl** – Via Zanardelli 13/A 25062 Concesio (BS) - Italy

P +39 030 2005259

S [global-tag](http://global-tag.com)

W [www.global-tag.com](http://www.global-tag.com)

M [sales@global-tag.com](mailto:sales@global-tag.com)

## DISCLAIMER

The information in this document is subject to change without notice. Global Tag assumes no responsibility for any errors that may appear in this document.

Application recommendations are guidelines only - actual results may vary and should be confirmed. This is a general purpose product not designed or intended for any specific application.

Global Tag Srl or its subsidiaries are not responsible for the performance or support of third party products and does not make any representations or warranties whatsoever regarding quality, reliability, functionality, or compatibility of these devices or products.

© Copyright 2016 - Global Tag Srl